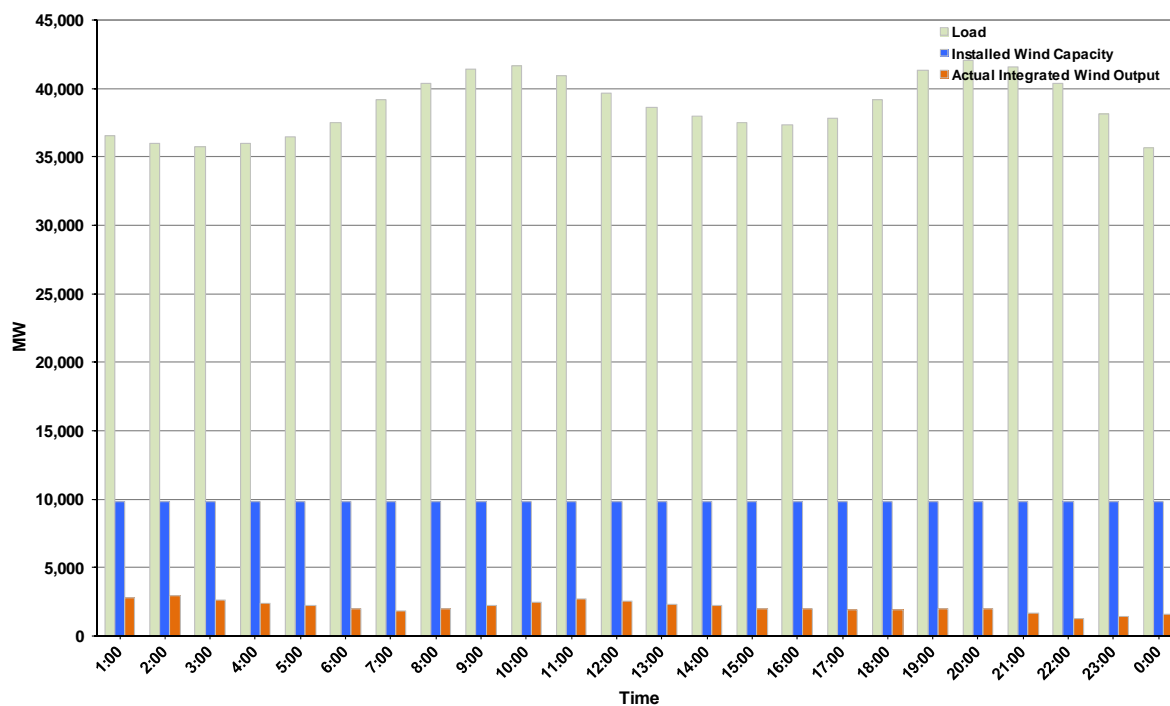




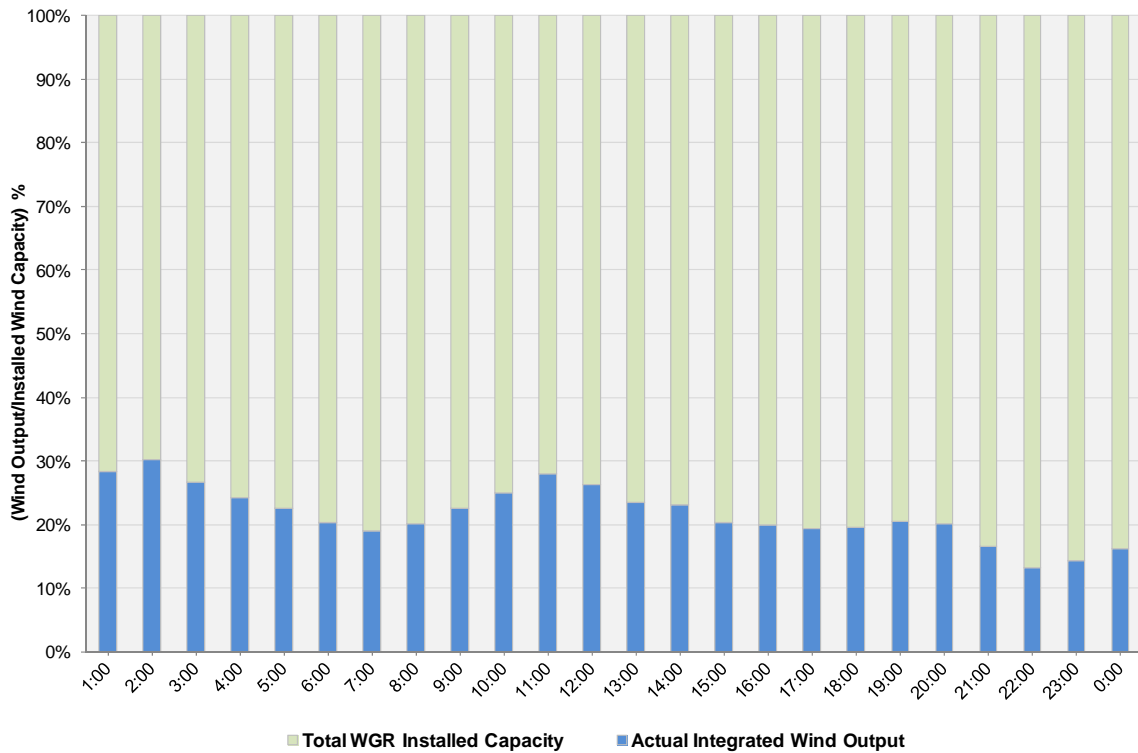
ERCOT Grid Operations Wind Integration Report: 02/12/12

Peak Load	42,027 MW
Load Peak Hour (HE)	20
Wind over Peak	1,971 MW
Wind Record 10/07/11	7,400 MW
Max Wind Value	3,116 MW
Wind Peak Time	01:45
Wind Integration %	8.66%

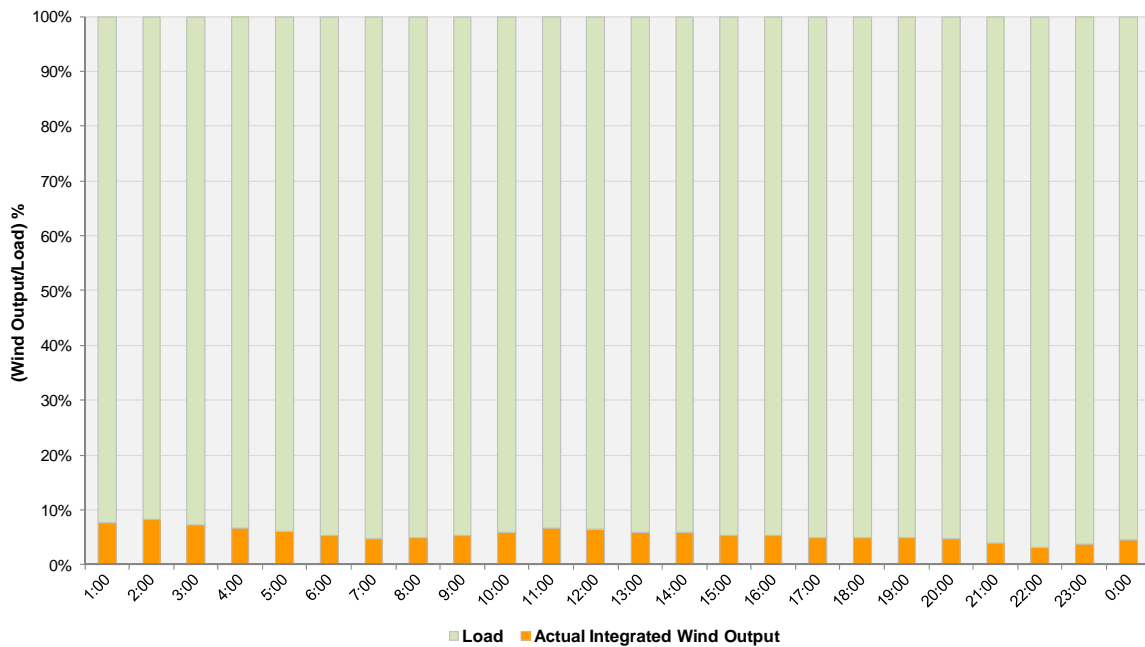
**Hourly Average Actual Load vs. Actual Wind Output
02-12-2012**



Actual Wind Output as a Percentage of the Total Installed Wind Capacity
02-12-2012



Actual Wind Output as a Percentage of the ERCOT Load
02-12-2012



ERCOT Load vs. Actual Wind Output 2/5/2012 - 2/12/2012

